



CULCHETH
HIGH SCHOOL
> THE BEST THAT WE CAN BE

- > RESPECT
- > HONESTY
- > EXCELLENCE

Pupil Premium Parents' Information Evening

Wednesday 27th September 2017



CULCHETH
HIGH SCHOOL
> THE BEST THAT WE CAN BE

> RESPECT
> HONESTY
> EXCELLENCE

Pupil Premium

“What is it?”

Mr Peter Groves



CULCHETH
HIGH SCHOOL

> THE BEST THAT WE CAN BE

> RESPECT
> HONESTY
> EXCELLENCE

The Pupil Premium is additional funding given to publicly funded schools in England to raise the attainment of ‘Ever 6’ pupils and close the gap between them and their peers.



Funding for 2017 to 2018

In the 2017 to 2018 financial year, schools will receive the following funding for each child registered as eligible for free school meals at any point in the last 6 years:

- £1,320 for pupils in reception year to year 6
- **£935 for pupils in year 7 to year 11**

Schools will also receive £1,900 for each pupil identified in the spring [school census](#) as having left local-authority care because of 1 of the following:

- adoption
- a special guardianship order
- a child arrangements order
- a residence order

If a pupil has been registered as eligible for free school meals and has also left local-authority care for any of the reasons above, they will attract the £1,900 rate. Children who have been in local-authority care for 1 day or more also attract £1,900 of pupil premium funding. Funding for these pupils is managed by the [virtual school head \(VSH\)](#) in the local authority that looks after the child.



Primary vs Secondary

- Primary and Secondary schools tend to allocate Pupil Premium funds *very* differently indeed.
- **We currently have 180 Pupil Premium students in Years 7-11.** There is no stigma attached to any of these students.
- All classes have a seating plan and teaching staff know where Pupil Premium students sit, what their attainment is currently and what they need to do to improve.
- They are by no means the only group where we monitor progress closely but they are a key group for the school.
- Where **any** underperformance exists we aim to tackle it squarely.
- No secondary school places the PP funds squarely on the 'head' of any particular student. Primaries are often able to do this due to the smaller cohort involved. Secondaries use the resources where they see fit for the greater good of the cohort's attainment. We are also given the monies in financial years NOT school years.



The National Picture

Ever 6 students are statistically less likely to achieve this 'benchmark' of 5 A*-C grades including English and Maths.

An approximate national estimate is that the Ever 6 gap is a whopping 30%:

a worked example... 70% (Non PP) vs 40% (PP)= 30% GAP

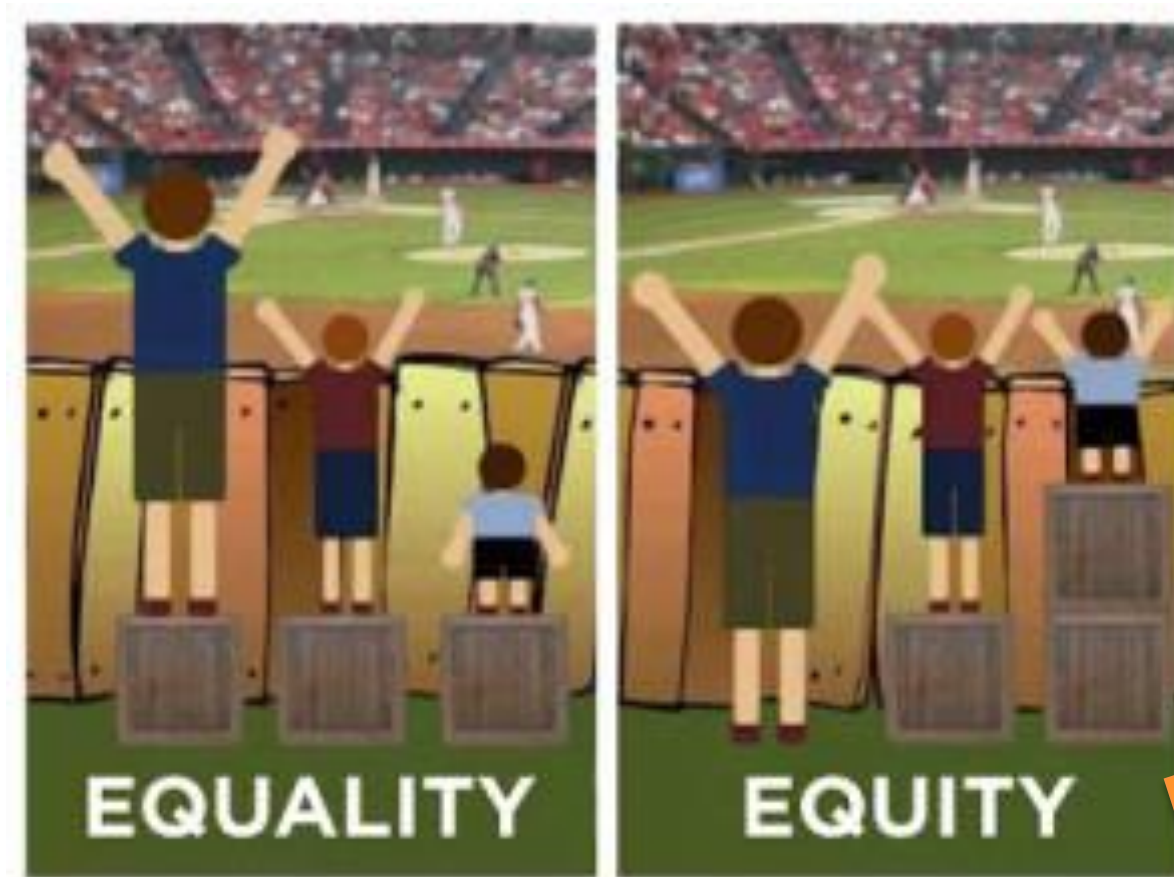


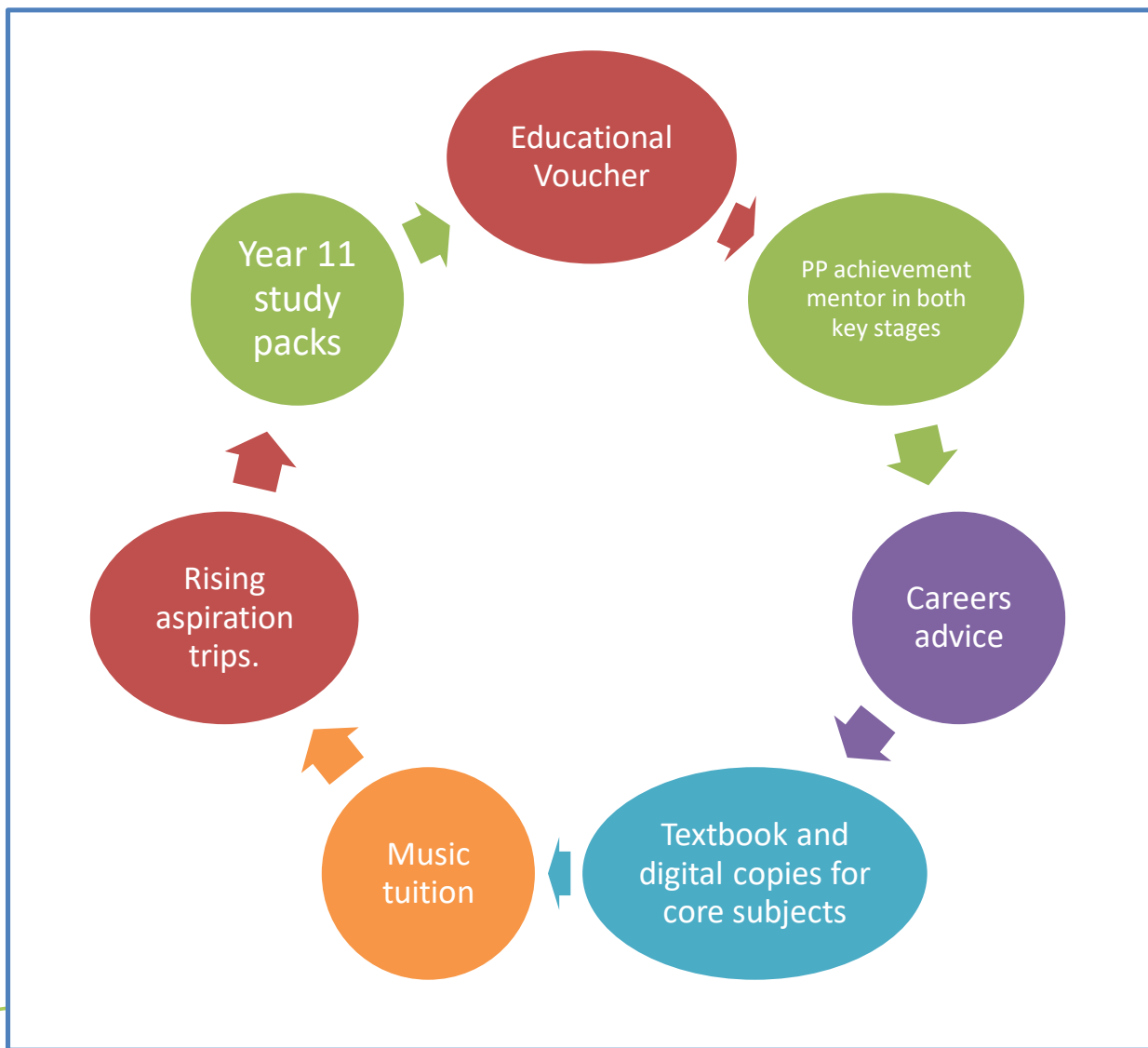
CULCHETH
HIGH SCHOOL

> THE BEST THAT WE CAN BE

- > RESPECT
- > HONESTY
- > EXCELLENCE

Mr William Maunder (Pupil Premium Progress Leader)







Pupil Premium Educational Voucher

- We are making £100 available directly to families to support their child's progress in school during this academic year.
 - What it can be spent on:
- Learning resources (books, revision guides, internet dongles etc.)
- Educational visits/trips arranged by the school (all visit/trip letters contain Pupil Premium information)
- In some circumstances it can be used for travel to/from alternative educational provision or for parents to attend Parents' Evenings
- Uniform replacement if this is an issue
- Other justified purchases that aid progress academically
- *N.B. The money does not roll over into the next academic year due to financial regulations and restrictions.*



Entry Requirements for most colleges/apprenticeships etc.

✓ 5 GCSE grades 9-5/4 including English and Maths

✓ This picture is changing...
'4' will not be accepted by colleges over the coming year.





New grading structure	Current grading structure
9	
8	A*
7	A
6	B
5	
4	C
3	D
2	E
1	F
	G
U	U

GOOD PASS (DfE)
5 and above = top of C and above

AWARDING
4 and above = bottom of C and above



Knuckling down and succeeding in school puts an average of £140,000 in a young person's back pocket, new in-depth analysis of the economic benefit of education involving more than 400,000 people reveals.

It shows achieving 5 A* to C (9-5/4) GCSE grades, including the vital English and Maths subjects, adds £80,000 to a student's earnings over their lifetime.

A further £60,000 is added to their wages if they go on to achieve at least 2 A levels, highlighting the economic value of the increased knowledge.

Source: gov.uk



CULCHETH
HIGH SCHOOL
> THE BEST THAT WE CAN BE

- > RESPECT
- > HONESTY
- > EXCELLENCE

Miss Creighton/ Mrs Hill

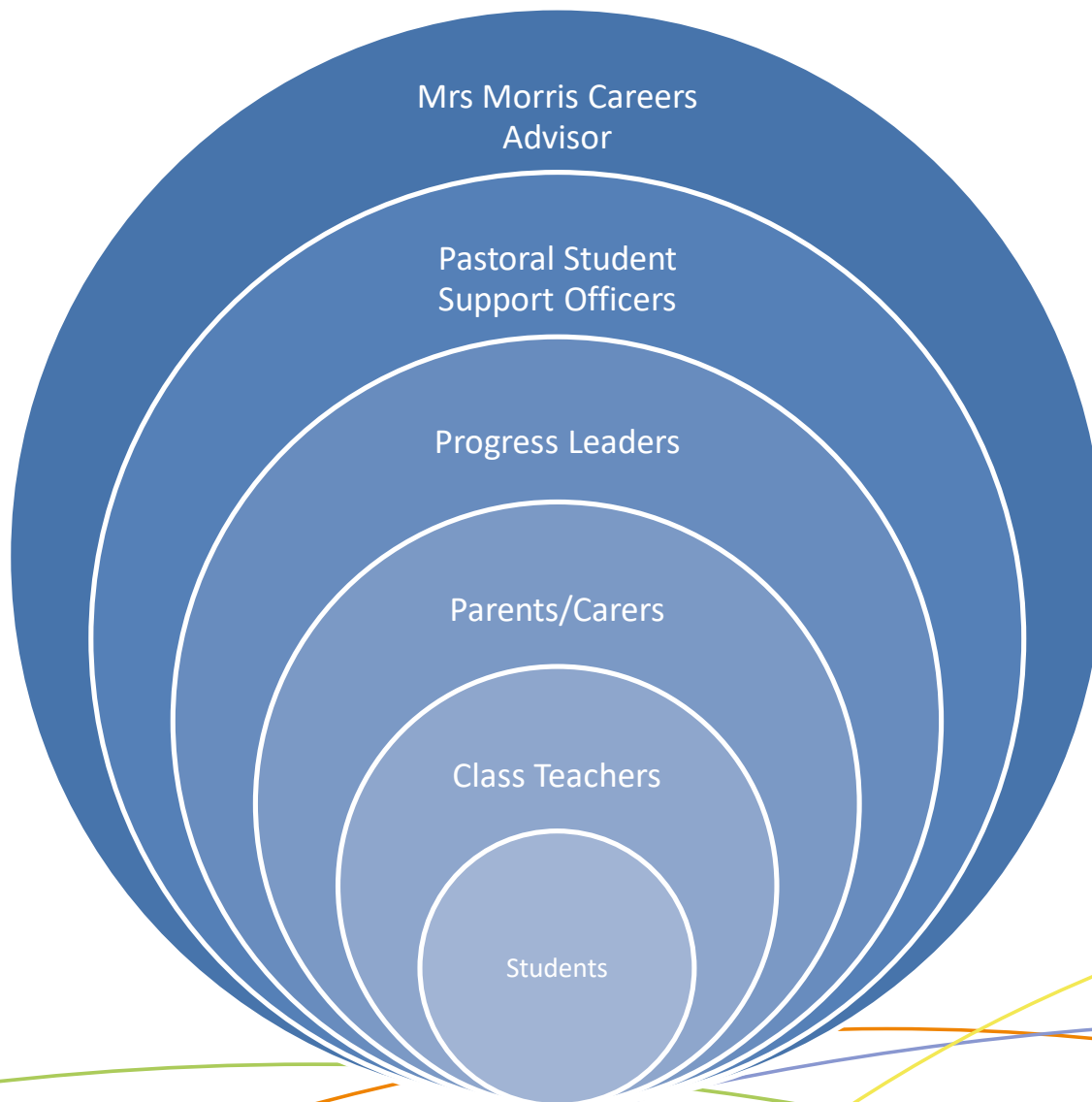
Pupil Premium Achievement Mentor



CULCHETH HIGH SCHOOL

> THE BEST THAT WE CAN BE

- > RESPECT
- > HONESTY
- > EXCELLENCE





Student X
91% Attendance
Sports Club
Intervention, Compulsory Revision Classes
5 Standard Passes (9-4) inc EM
Level 3 BTEC - College

Student Z
98% Attendance
Extra Curricular, School Celebration Evening, Music, Dance,
Intervention, Revision Classes, Study Area, Independent Study
10 Strong Passes (9-5) inc EM
A'Levels - College



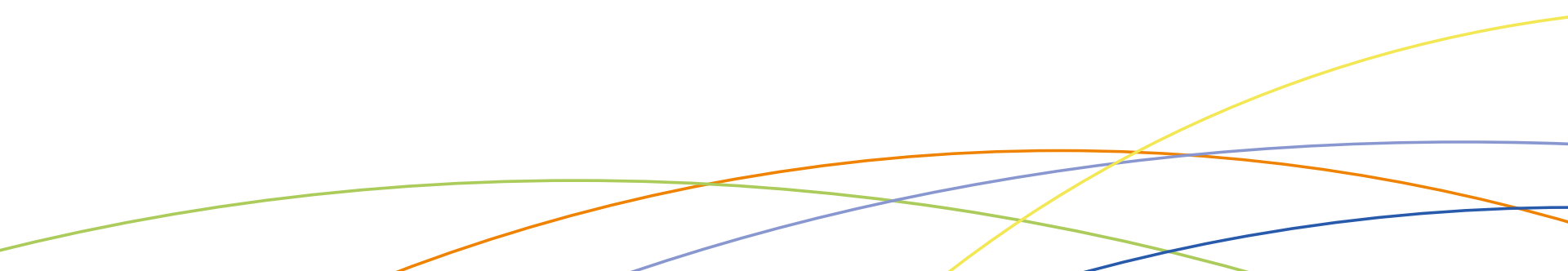
- Build Relationships
- Focus - Pathway
- Encourage a 'Growth Mindset'
- Set SMART Goals (specific, measurable, agreed upon, realistic, time based)
- Develop Study Skills (i.e organisation and time management)
- Believe in Success!



CULCHETH
HIGH SCHOOL
> THE BEST THAT WE CAN BE

- > RESPECT
- > HONESTY
- > EXCELLENCE

Attendance





A student with 90% attendance

Has missed.....

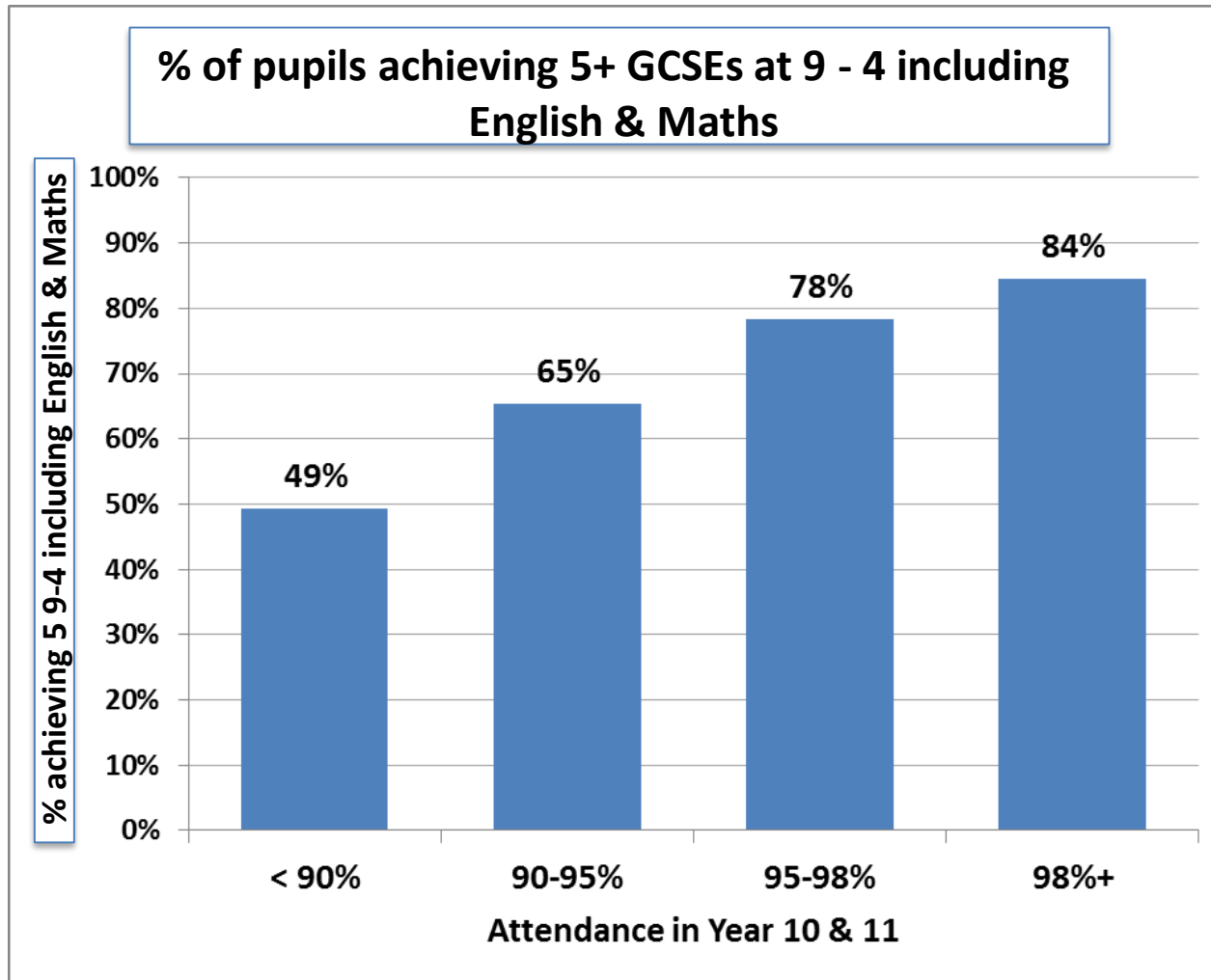
10% of the academic year

½ a day of school a week

4 weeks of school across the year

97 hours of teaching

If a student has 90% attendance for the 5 years of secondary school they will have missed ½ a year of their education!





**CULCHETH
HIGH SCHOOL**

> THE BEST THAT WE CAN BE

> RESPECT
> HONESTY
> EXCELLENCE

PUPIL PREMIUM CONTACTS:

Mr P Groves (Assistant Headteacher)- 01925 768596
or PGR@culchethhigh.org.uk

Mr W Maunder (Pupil Premium Progress Leader)- 01925 767587
or WMA@culchethhigh.org.uk

Miss R Creighton (Pupil Premium Achievement Mentor)-
01925 767587 or RCR@culchethhigh.org.uk

Mrs Claire Hill (Pupil Premium Achievement Mentor) 01925767587 or
CHI@culchethhigh.org.uk



CULCHETH
HIGH SCHOOL

> THE BEST THAT WE CAN BE

> RESPECT
> HONESTY
> EXCELLENCE

And lastly... one thing to take away from tonight

We learn...

10% of what we read

20% of what we hear

30% of what we see

50% of what we hear and see

70% of what we discuss with others

80% of what we experience personally

95% of what we teach to someone else

(William Glasser)